



## Environmental Safety

Inside we have included Davis Health System “best practices” used at our facility during the COVID-19 pandemic.

Our processes were developed according to guidelines from the Centers for Disease Control and Prevention, The American Hospital Association, CMS and other professional healthcare resources.

Feel free to adapt these safety practices to best fit the needs of your business or organization.

**QUESTIONS? Call our Infection Control Department at 304.637.3124.**

---

DHS Environmental Safety .....	pg. 2-3
Cleaning & Disinfecting .....	pg. 4-6
Social Distance Poster .....	pg. 7

## Environmental Safety

To prevent the spread of respiratory diseases, like coronavirus, we have implemented intense cleaning and sanitizing practices, and have redesigned our environments.



All staff and public must wear masks upon entry.



Waiting areas, queue areas, and other public areas are arranged for social distancing of 6 feet. Floor markers instruct patients to remain 6 feet back from counter areas. Discontinue use of magazines and shared items in waiting areas.



Daily intensive sanitizing and housekeeping measures in high-touch and patient contact areas. UV lights in air handling units and terminal cleaning processes provide additional disinfection and decontamination.



Clear plastic barriers help to shield against droplets from coughs or sneezes in customer contact areas.

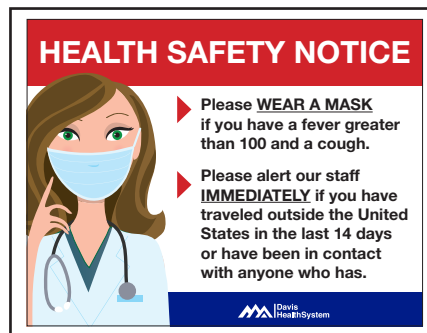
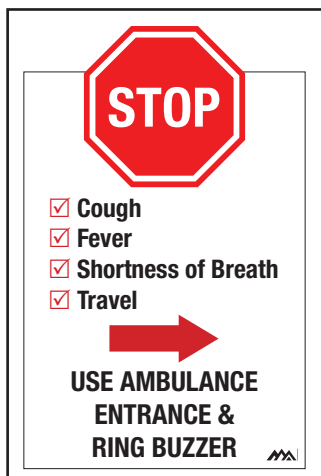
**Support respiratory etiquette and hand hygiene for employees, customers, and worksite visitors.**



- Provide tissues and no-touch disposal receptacles.
- Place hand sanitizers in multiple locations to encourage hand hygiene.
- Place posters that encourage hand hygiene to help stop the spread at the entrance to your workplace and in other workplace areas where they are likely to be seen.

**Safety Communications**

Communicate important social distancing and hygiene messages through effective signage placed on doors and windows. Below are samples of signage Davis Health System has implemented throughout the pandemic - feel free to use these as guides for your own business.



Davis Health System is glad to share any of the following downloadable signs which can be placed on doors or windows. Call 304.637.3378 or email [contactus@davishealthsystem.org](mailto:contactus@davishealthsystem.org).

Online vendors are also available for customizable or standard COVID-19 signage.

Visit Vista Print for samples:

[https://www.vistaprint.com/covid-19-signage?xnid=TopNav\\_COVID-19&xnav=TopNav](https://www.vistaprint.com/covid-19-signage?xnid=TopNav_COVID-19&xnav=TopNav)

# Cleaning And Disinfecting Your Facility

## Everyday Steps, Steps When Someone is Sick, and Considerations for Employers

### How to clean and disinfect

**Wear disposable gloves** to clean and disinfect.

#### Clean

- **Clean surfaces using soap and water.** Practice routine cleaning of frequently touched surfaces.



#### High touch surfaces include:

Tables, doorknobs, light switches, countertops, handles, desks, phones, keyboards, toilets, faucets, sinks, etc.



#### Disinfect

- Clean the area or item with soap and water or another detergent if it is dirty. Then, use a household disinfectant.
- **Recommend use of EPA-registered household disinfectant.** Follow the instructions on the label to ensure safe and effective use of the product.

Many products recommend:

- Keeping surface wet for a period of time (see product label)
- Precautions such as wearing gloves and making sure you have good ventilation during use of the product.

- **Diluted household bleach solutions may also be used** if appropriate for the surface. Check to ensure the product is not past its expiration date. Unexpired household bleach will be effective against coronaviruses when properly diluted.

**Follow manufacturer's instructions** for application and proper ventilation. Never mix household bleach with ammonia or any other cleanser.

**Leave solution** on the surface for **at least 1 minute**

**To make a bleach solution**, mix:

- 5 tablespoons (1/3rd cup) bleach per gallon of water
- OR
- 4 teaspoons bleach per quart of water
- **Alcohol solutions with at least 70% alcohol.**

### Soft surfaces

For soft surfaces such as **carpeted floor, rugs, and drapes**

- **Clean the surface using soap and water** or with cleaners appropriate for use on these surfaces.



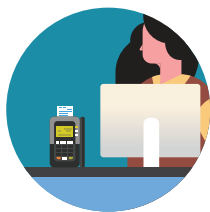
- **Laundry items** (if possible) according to the manufacturer's instructions. Use the warmest appropriate water setting and dry items completely.

OR

- **Disinfect with an EPA-registered household disinfectant.** [These disinfectants](#) meet EPA's criteria for use against COVID-19.

## Electronics

- For electronics, such as **tablets, touch screens, keyboards, remote controls, and ATM machines**
- Consider putting a **wipeable** cover on electronics.
- **Follow manufacturer's instruction** for cleaning and disinfecting.
  - If no guidance, **use alcohol-based wipes or sprays containing at least 70% alcohol.** Dry surface thoroughly.



## Laundry

For clothing, towels, linens and other items

- **Wear disposable gloves.**
- **Wash hands with soap and water** as soon as you remove the gloves.
- **Do not shake** dirty laundry.
- Launder items according to the manufacturer's instructions. Use the **warmest appropriate water setting** and dry items completely.
- Dirty laundry from a sick person **can be washed with other people's items.**
- Clean and **disinfect clothes hampers** according to guidance above for surfaces.



## Cleaning and disinfecting your building or facility if someone is sick

- **Close off areas** used by the sick person.
- **Open outside doors and windows** to increase air circulation in the area. **Wait 24 hours** before you clean or disinfect. If 24 hours is not feasible, wait as long as possible.
- Clean and disinfect **all areas used by the sick person**, such as offices, bathrooms, common areas, shared electronic equipment like tablets, touch screens, keyboards, remote controls, and ATM machines.
- If **more than 7 days** since the sick person visited or used the facility, additional cleaning and disinfection is not necessary.
  - Continue routine cleaning and disinfection.



## When cleaning

- **Wear disposable gloves and gowns for all tasks in the cleaning process, including handling trash.**
  - Additional personal protective equipment (PPE) might be required based on the cleaning/disinfectant products being used and whether there is a risk of splash.
  - Gloves and gowns should be removed carefully to avoid contamination of the wearer and the surrounding area.
- **Wash your hands often** with soap and water for 20 seconds.
  - Always wash immediately after removing gloves and after contact with a sick person.





- Hand sanitizer: If soap and water are not available and hands are not visibly dirty, an alcohol-based hand sanitizer that contains at least 60% alcohol may be used. However, if hands are visibly dirty, always wash hands with soap and water.

- **Additional key times to wash hands** include:

- After blowing one's nose, coughing, or sneezing.
- After using the restroom.
- Before eating or preparing food.
- After contact with animals or pets.
- Before and after providing routine care for another person who needs assistance (e.g., a child).

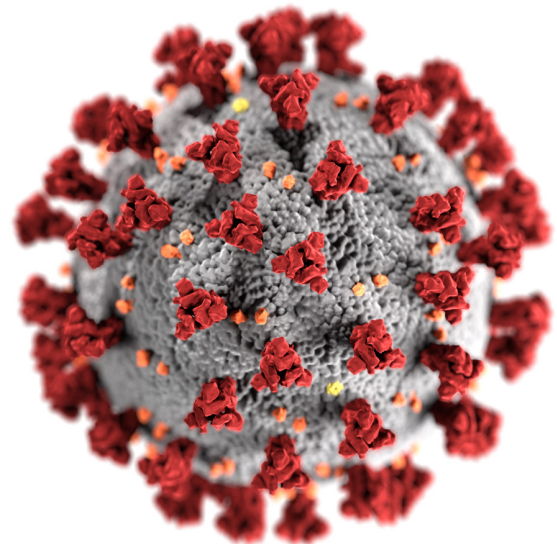
### For facilities that house people overnight:

- Follow CDC's guidance for [colleges and universities](#). Work with state and local health officials to determine the best way to isolate people who are sick and if temporary housing is needed.
- For guidance on cleaning and disinfecting a sick person's bedroom/bathroom, review CDC's guidance on [disinfecting your home if someone is sick](#).

### Additional Considerations for Employers

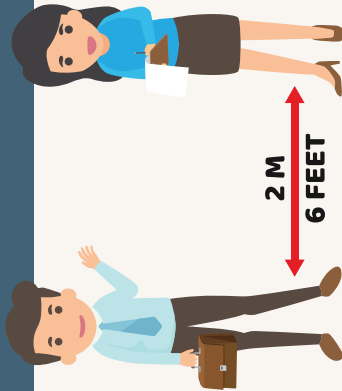


- **Educate workers** performing cleaning, laundry, and trash pick-up to recognize the symptoms of COVID-19.
- Provide instructions **on what to do if they develop symptoms within 14 days** after their last possible exposure to the virus.
- Develop **policies for worker protection and provide training** to all cleaning staff on site prior to providing cleaning tasks.
  - Training should include when to use PPE, what PPE is necessary, how to properly don (put on), use, and doff (take off) PPE, and how to properly dispose of PPE.
- Ensure workers are **trained on the hazards of the cleaning chemicals** used in the workplace in accordance with OSHA's Hazard Communication standard ([29 CFR 1910.1200](#)).
- **Comply** with OSHA's standards on Bloodborne Pathogens ([29 CFR 1910.1030](#)), including proper disposal of regulated waste, and PPE ([29 CFR 1910.132](#)).

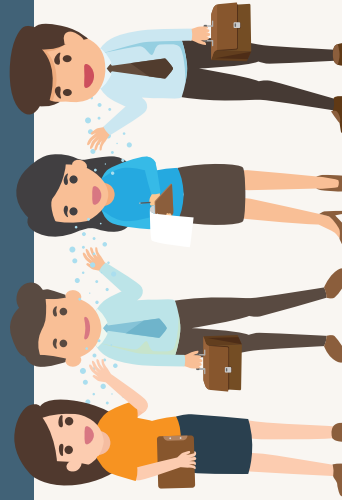


# SOCIAL DISTANCING

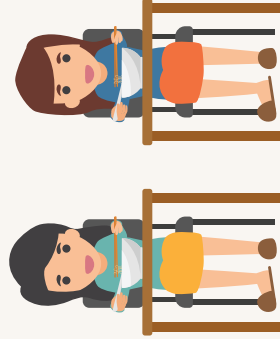
SOCIAL DISTANCING PROTECT YOURSELF FROM COVID-19



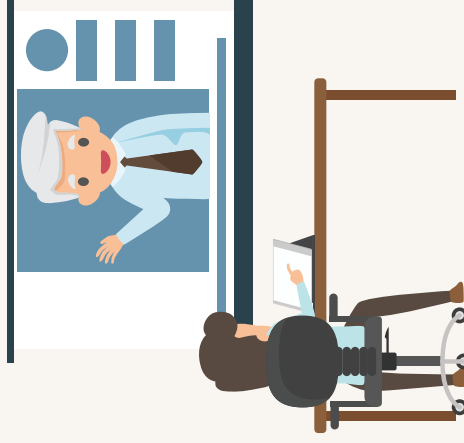
**Social Distancing**



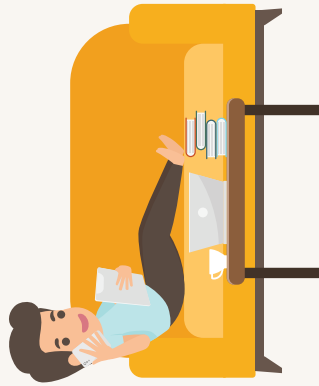
**Avoid crowded place**



**Set meal**



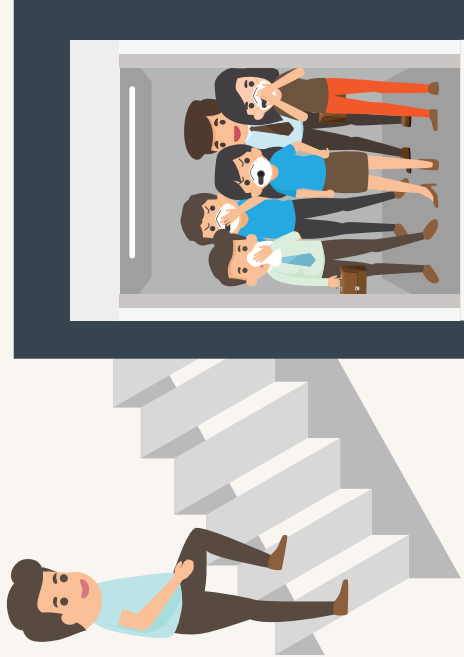
**Use Video Conference**



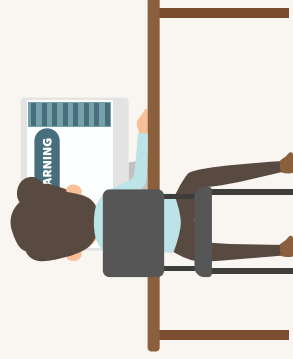
**Work at home**



**Rest at home**



**Avoid sharing with others**



**Online Learning**